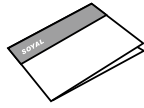


Contents

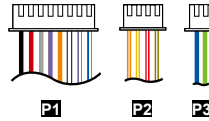
1 Products



2 User Guide



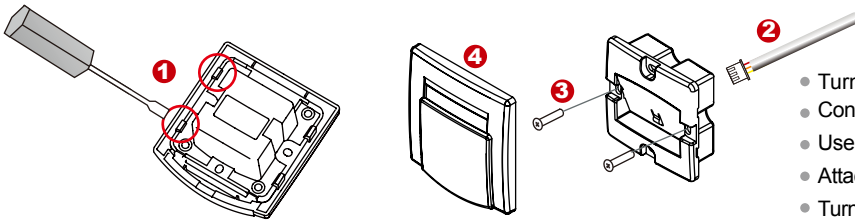
3 Terminal Cables



4 Allen Key and Screws

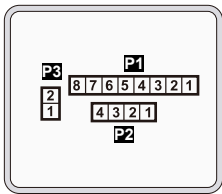


Installation



- Turning back the housing, prying two tenons open as marked in circle.
- Connect the terminal cables to the body.
- Use a screwdriver to screw the body onto the wall.
- Attach the shell to the body.
- Turn on the power and LED will light and beep will sound.

Connector Table



Cable: P1

Wire Application	Pin	Color	Description
Relay Output	1	Blue White	(N.O.)DC24V1Amp
	2	Purple White	(N.C.)DC24V1Amp
	3	White	(COM)DC24V1Amp
DI-2	4	Orange	Negative Trigger Input
DI-3	5	Purple	Negative Trigger Input
Card Present	6	Gray	Transistor OutputDC
Power	7	Thick Red	12V
	8	Thick Black	DC 0V

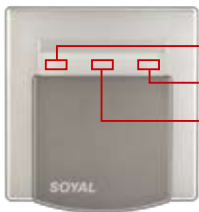
Cable: P2

Wire Application	Pin	Color	Description
DI-1	1	Brown White	Negative Trigger Input
DI-0	2	Red White	Negative Trigger Input
DO-1	3	Yellow White	Transistor Output
DO-0	4	Orange White	Transistor Output

Cable: P3

Wire Application	Pin	Color	Description
Networking	1	Thick Green	RS-485 (B-)
	2	Thick Blue	RS-485 (A+)

Front Panel & Indicator



- Card Present Error (Red)
- Card Present OK (Green)
- Stand-by (White)

- White LED lights up by no medium inserted.
- Green LED lights up and one beep sounds by valid medium inserted.
- Red LED lights up and two beeps sound by invalid medium inserted.
- Red LED lights up and four beeps sound by authorization does not match.

Wiring Diagram

